

Geronimo and Alligator Creeks Watershed Partnership

GBRA River Annex in Seguin October 6, 2009

6:00 Refreshments and Sign In

6:30 Meeting Overview

- Nikki Dictson, Texas AgriLife Extension Service

6:35 Welcome and Introductions

- Mike Wiggins, Guadalupe County Judge
- Betty Ann Matthies, Mayor of Seguin
- W.E. West, Jr., General Manager, Guadalupe-Blanco River Authority
- Russell Bading, Chairman, Comal-Guadalupe Soil and Water Conservation District

6:50 Water Quality in the Geronimo and Alligator Creeks Watershed

- Debbie Magin, Director of Water Quality Services,
Guadalupe-Blanco River Authority

7:10 Watershed Protection Planning

- Brian Koch, Regional Watershed Coordinator,
Texas State Soil and Water Conservation Board

7:20 Geronimo and Alligator Creeks Watershed Partnership

- Nikki Dictson, Extension Program Specialist II,
Texas AgriLife Extension Service

7:45 Geronimo Creek Monitoring Project

- Lee Gudgell, Water Quality Technician,
Guadalupe-Blanco River Authority

7:55 Next Steps and Texas Watershed Steward Program

- Ward Ling, Extension Program Specialist,
Texas AgriLife Extension Service

8:05 Open Discussion and Questions

- Nikki Dictson and Debbie Magin

8:30 Door Prizes and Adjourn



Permitted Operator	Other	Amount of land								Aware of Water Quality Concern		Willing to serve in Partnership		If yes, what Capacity		
		<1	2-4	5-10	11-50	51-100	101-300	300-500	>500	Yes	No	Yes	No	SC	WG	General
	master naturalist & Tx stream team member									x		x		x	x	
			x							x		x		x	x	
		x								x		x		x		x
		x								x		x		x		x
	farm across from where consulting engineer serves	x									x		x	x		
		x									x		x			x
		x									x		x			x
	chairman comal and guad. Swcd									x		x		x	x	
										x	x		x			x
												x				
				x						x			x			
										x			x			
										x			x			
	aquatic biologist	x										x		x		x
			x									x				
	see comments											x				x
												x				x
												x				
	not in this watershed											x				
												x				
	siempre sustainable network											x				x
												x				
	consultant											x				
												x				
												x				
	concerned civil eng	x										x				
		x										x				
												x				x
												x				

No	Monday	Tuesday	Wednesday	Thursday	Friday	Any Topics or Issues Comments	Learning about TWS		How did you learn about this meeting?								
							Yes	No	Mail	Newspaper	Email	Website	Newsletter	Friend	radio	Flier	
	any				any		x					x					x
	a,m	a,m		a,m	m		x								x		
	any	any	a,m	any	any		x			x							
		e		e		future development, rural	x			x	x	x	x	x	x		x
	any	any	any	any	any	flooded and pre	x				x				x		
		e		e		water quality an	x								x		
		e		e	any	flooded and wa	x		x								
	e	e	e	e	m	watershed partn	x				x						x
	any	a,m	a	a,m	any		x				x						
	e	e					x			x							
		a		e		development ru	x						x				
							x			x	x						x
							x			x							
	e	e	e				x						x				
						responsible wate	x										x
	a				e	silt control, cree	x			x							
		e				resource preserv	x			x	x					x	x
	e	a	a	a, e	m		x			x							
	a	a	a	m	m	quality of H2O c	x			x							
	m		m		m	flood control	x				x						x
		e					x					x					
	a	a	a	a		flooded:flow fro	x										x
	e	e	e	e	e	sharing this info with other		x									
	any	any	any	any	any	flooded, usda r	x			x							
	m	any	m	m	m	a lot	x										
	any	any	any	any	any		x			x			x				
	e	m,e		m	any	ecoli & nitrates	x			x							x
	m,a	m,a	m,a	m,a	m,a	level of treatmen	x			x							
	m	m	m	m		getting atrazine c	x			x	x					x	x
	ma	ma	a	ma	ma	farming BMPs	x										
							x										
	any	any	any				x			x	x						x

Geronimo and Alligator Creeks Watershed Partnership

Watershed Protection Plan

Overview Materials

Meeting Notes and Presentations

Data

Contact Information

Nikki Dictson

Texas AgriLife Extension Service

979-458-3478

979-575-4424

n-dictson@tamu.edu

Ward Ling

Texas AgriLife Extension Service

979-845-2425

wling@ag.tamu.edu

Debbie Magin

Guadalupe Blanco River Authority

830-379-5822

dmagin@gbra.org

Loren Henley

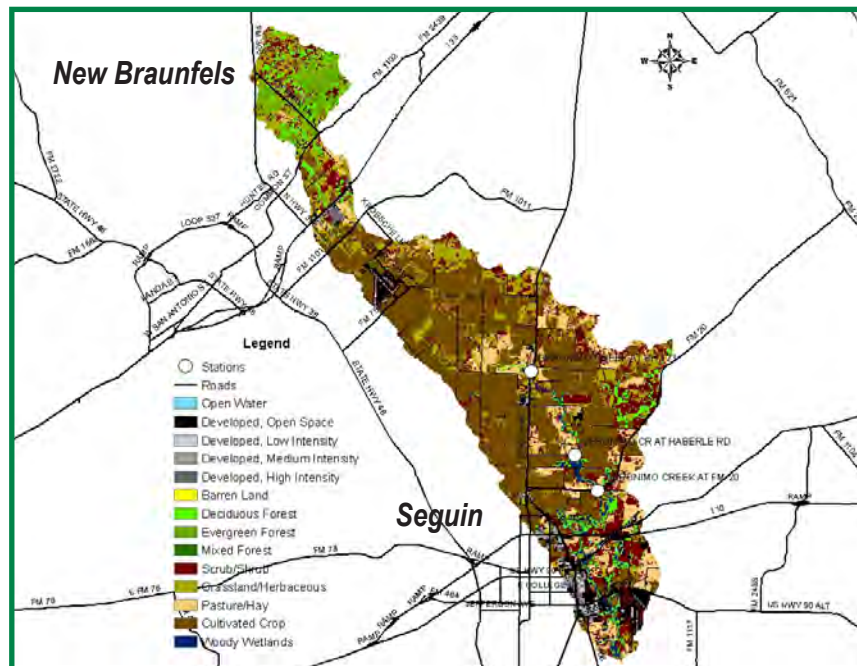
Texas State Soil and Water Conservation Board

254-773-2250 ext.240

lhenley@tsswcb.state.tx.us



Geronimo Creek Watershed Land Use and Stations Map



For more information visit <http://geronimocreek.org>



Geronimo and Alligator Creeks Watershed Partnership

GBRA River Annex in Seguin January 12, 2010 Draft Agenda

- 6:00 Refreshments and Sign In**
- 6:30 Welcome**
- Judge Mike Wiggins, Guadalupe County
 - Debbie Magin, GBRA
- 6:35 Introductions, Discussion and Approval of the Steering Committee Members**
- Nikki Dictson, Texas AgriLife Extension Service
- 6:55 Geronimo and Alligator Creeks Watershed Partnership and Ground Rules**
- Nikki Dictson, Texas AgriLife Extension Service
- 7:35 Steps in Watershed Protection Planning**
- Nikki Dictson, Texas AgriLife Extension Service
- 7:50 Potential Point and Nonpoint Sources of Pollution**
- Ward Ling, Texas AgriLife Extension Service
- 8:05 Next Steps**
- Ward Ling, Texas AgriLife Extension Service
- 8:10 Open Discussion and Questions**
- Nikki Dictson, Debbie Magin and Ward Ling
- 8:30 Adjourn**





355A Soil and Crop Sciences, TAMU, College Station, Texas 77843-2474, 979-458-3478 or 979-575-4424

January 4, 2010

Dear Citizens of the Geronimo and Alligator Creeks Watershed:

The Texas AgriLife Extension Service, the Guadalupe-Blanco River Authority and the Texas State Soil and Water Conservation Board are partnering with local citizens to protect and improve water quality in Texas' watersheds by helping to develop and implement Watershed Protection Plans. Watershed Protection Plans are designed to restore and/or protect surface waters impacted by nonpoint source pollution by implementing best management practices. Geronimo Creek and its tributary Alligator Creek flow through Comal and Guadalupe Counties, and have been selected for development of a Watershed Protection Plan based on water quality. You are invited to participate in this process by attending the first Steering Committee meeting on January 12, 2010, in Seguin at the Guadalupe-Blanco River Authority River Annex located at 905 Nolan in Seguin. Sign up and refreshments will begin at 6:00 p.m. and the presentations will start at 6:30 p.m. This meeting will introduce the Steering Committee and discuss how you can participate in developing the Watershed Protection Plan.

Watershed Protection Plans are driven by the local community. Local stakeholders help identify potential sources of water pollution, and plan efforts to improve water quality. The ultimate goal of the Plan is enhance and protect your water resources now, and into the future. Key local partners supporting the process include Comal and Guadalupe Counties, the Cities of Seguin and New Braunfels, New Braunfels Utilities, and the Comal-Guadalupe Soil and Water Conservation District.

Your active participation is essential to the success of this important project. Join us in developing and implementing a Watershed Protection Plan for Geronimo and Alligator Creeks. If you have any questions regarding this process, please contact Nikki Dictson with Extension at 979-575-4424 (n-dictson@tamu.edu) or Debbie Magin with GBRA at 830-379-5822 (dmagin@gbra.org). You also can visit our website at <http://geronimocreek.org>. Thank you.

Sincerely,

Nikki Dictson



Geronimo and Alligator Creeks Watershed Partnership Ground Rules

The following are the Ground Rules for the Geronimo and Alligator Creeks Watershed Partnership (hereafter referred to as the Partnership) agreed to and signed by the members of the Geronimo and Alligator Creeks Watershed Partnership Steering Committee (hereafter referred to as the Steering Committee) in an effort to develop and implement a watershed protection plan.

The signatories to these Ground Rules agree as follows:

GOALS

The goal of the Partnership is to develop and implement a Watershed Protection Plan (WPP) to improve and protect the water quality of Geronimo (Segment 1804A) and Alligator Creeks; Alligator Creek is a tributary to Geronimo Creek. According to the *2008 Texas Water Quality Inventory and 303(d) List*, Geronimo Creek exhibits elevated nutrient levels and does not support the contact recreation use due to elevated bacteria concentrations.

The Steering Committee will consider and attempt to incorporate the following into the development and implementation of the WPP:

- Economic feasibility, affordability and growth;
- Unique environmental resources of the watershed;
- Regional water planning efforts; and
- Regional cooperation.

POWERS

The Steering Committee is the decision-making body for the Partnership. As such, the Steering Committee will formulate recommendations to be used in drafting the WPP and will guide the implementation of the WPP to success. Formal Steering Committee recommendations will be identified as such in the planning documents and meeting summaries.

The Steering Committee is an independent group of watershed stakeholders and individuals with an interest in restoring and protecting the designated uses and the overall health of the Geronimo Creek Watershed.

The Steering Committee provides the method for public participation in the planning process and will be instrumental in obtaining local support for actions aimed at restoring surface water quality in Geronimo Creek.

TIME FRAME

Development of a Geronimo Creek WPP will require at least a 15-month period. The Steering Committee will function under a March 2011 target date to complete the initial development of the WPP. Achieving water quality improvement in Geronimo Creek may require significant time as implementation is an iterative process of executing programs and practices followed by achievement of interim milestones and reassessment of strategies and recommendations. The Steering Committee may continue to function thereafter throughout implementation of the WPP.

STEERING COMMITTEE MEMBERSHIP SELECTION

The Steering Committee is composed of stakeholders from the Geronimo Creek Watershed. Initial solicitation of members for equitable geographic and topical representation was

conducted using three methods: 1) consultation with the Texas AgriLife Extension Service County Agents, Guadalupe-Blanco River Authority (GBRA), Comal-Guadalupe Soil and Water Conservation District and local and regional governments, 2) meetings with the various stakeholder interest groups and individuals, and 3) self-nomination or requests by the various stakeholder groups or individuals.

Stakeholders are defined as either those who make and implement decisions or those who are affected by the decisions made or those who have the ability to assist with implementation of the decisions.

STEERING COMMITTEE

Members include both individuals and representatives of organizations and agencies. A variety of members serve on the Steering Committee to reflect the diversity of interests within the Geronimo Creek Watershed and to incorporate the viewpoints of those who will be affected by the WPP.

Size of the Steering Committee is not strictly limited by number but rather by practicality. To effectively function as a decision-making body, the membership shall achieve geographic and topical representation. If the Steering Committee becomes so large that it becomes impossible or impractical to function, the Committee will institute a consensus-based system for limiting membership.

Steering Committee members are expected to participate fully in Committee deliberations. Members will identify and present insights, suggestions, and concerns from a community, environmental, or public interest perspective. Steering Committee members are expected to work constructively and collaboratively with other members toward reaching consensus.

Committee members will be expected to assist with the following:

- Identify the desired water quality conditions and measurable goals;
- Prioritization of programs and practices to achieve water quality and programmatic goals;
- Help develop a WPP document;
- Lead the effort to implement this plan at the local level; and
- Communicate implications of the WPP to other affected parties in the watershed.

Steering Committee members will be asked to sign the final WPP.

The Steering Committee will not elect a chair, but rather remain a facilitated group. AgriLife Extension and/or GBRA will serve as the facilitator.

In order to carry out its responsibilities, the Steering Committee has discretion to form standing and ad hoc work groups to carry out specific assignments from the Steering Committee. Steering Committee members will serve on at least one work group and represent that work group at Steering Committee meetings to bring forth information and recommendations.

WORK GROUPS

Topical work groups formed by the Steering Committee will carry out specific assignments from the Steering Committee. Each Work Group will be composed of at least 1 Steering Committee member and any other members of the Partnership, including the Technical Advisory Group,

with a vested interest in that topic. There is no limit to the number of members on a work group. Each work group may elect a spokesperson.

Work Groups will include, but will not be limited to the following:

- Agricultural Nonpoint Source Work Group
- Urban Nonpoint Source Work Group
- Wastewater Work Group

Tasks such as research or plan drafting will be better performed by these topical work groups. Work Group members will discuss specific issues and assist in developing that portion of the WPP, including outreach, education and implementation recommendations.

Work Groups and individual Work Group members are not authorized to make decisions or speak for the Steering Committee.

TECHNICAL ADVISORY GROUP

A Technical Advisory Group (TAG) consisting of state and federal agencies with water quality responsibilities will provide guidance to the Steering Committee and participate in Work Groups. The TAG will assist the Steering Committee and Work Groups in WPP development by answering questions related to the jurisdiction of each TAG member. The TAG includes, but is not limited to, representatives from the following agencies:

- Texas Commission on Environmental Quality
- Texas AgriLife Extension Service
- Texas AgriLife Research
- Texas Department of Agriculture
- Texas Parks and Wildlife Department
- Texas State Soil and Water Conservation Board (TSSWCB)
- Texas Water Development Board
- U.S. Environmental Protection Agency
- U.S. Geological Survey
- USDA Natural Resources Conservation Service
- USDA Farm Service Agency

REPLACEMENTS AND ADDITIONS

The Steering Committee may add new members if (1) a member is unable to continue serving and a vacancy is created or (2) important stakeholder interests are identified that are not represented by the existing membership. A new member must be approved by a majority of existing members. In either event, the Steering Committee will, when practical, accept additional members.

ALTERNATES

Members unable to attend a Steering Committee meeting (an absentee) may send an alternate. An absentee should provide advance notification to the facilitator of the desire to send an alternate.

An alternate attending with prior notification from an absentee will serve as a proxy for that absent Steering Committee member and will have voting privileges.

Absentees may also provide input via another Steering Committee member or send input via the facilitator. The facilitator will present such information to the Steering Committee.

ABSENCES

All Steering Committee members agree to make a good faith effort to attend all Steering Committee meetings; however, the members recognize that situations may arise necessitating the absence of a member. Three absences in a row of which the facilitator was not informed of beforehand or without designation of an alternate constitute a resignation from the Steering Committee.

DECISION MAKING PROCESS

The Steering Committee will strive for consensus when making decisions and recommendations. Consensus is defined as everyone being able to live with the decisions made. Consensus inherently requires compromise and negotiation.

If consensus cannot be achieved, the Steering Committee will make decisions by a simple majority vote. If members develop formal recommendations, they will do so by two-thirds majority vote.

Steering Committee members may submit recommendations as individuals or on behalf of their affiliated organization.

QUORUM

In order to conduct business, the Steering Committee will have a quorum. Quorum is defined as at least 51% of the Steering Committee (and/or alternates) present and a representative of either Extension, GBRA or TSSWCB present.

FACILITATORS

AgriLife Extension and GBRA serve as the Facilitators for the Partnership, Steering Committee, and Work Groups. The Facilitators are independent positions, financed through a federal Clean Water Act §319(h) nonpoint source grant from the TSSWCB and the U.S. Environmental Protection Agency. Each has specific roles to perform in facilitating the Partnership and Steering Committee.

TSSWCB: The TSSWCB provides technical assistance to the stakeholders in developing the Geronimo Creek WPP. The TSSWCB will ensure the planning process culminates in a WPP for Geronimo Creek and ensure the Geronimo Creek WPP satisfies the nine elements fundamental to a WPP as promulgated by the U.S. Environmental Protection Agency.

AgriLife Extension and GBRA Facilitators: The Facilitators will serve as an educator and facilitator to help the Steering Committee organize its work, run meetings, coordinate educational trainings and draft notes and other materials if requested, and work with the TSSWCB to facilitate the development of the plan. The Agrilife Extension Facilitators and GBRA will co-lead the meetings and work with all of the members to ensure that the process runs smoothly. The role of the Facilitators includes working with the Steering Committee to prepare meeting summaries, assisting in the location and/or preparation of background materials, distributing documents the Steering Committee develops, conducting public outreach, moderating public workshops, providing assistance to Steering Committee members regarding Committee business between meetings, and other functions as the Steering Committee requests.

MEETINGS

All meetings (Partnership, Steering Committee, and Work Group) are open to the public and all interested stakeholders are encouraged and welcomed to participate.

Over the development period, regular meetings of either the Steering Committee or Work Groups will occur each month. The Steering Committee may determine the need for additional meetings. Steering Committee and Work Group meetings will be scheduled to accomplish specific milestones in the planning process; as such, if a meeting is not needed (as determined by the Steering Committee, Extension and GBRA, and/or TSSWCB) in any particular month it will not be scheduled.

Meetings will start and end on time. Meeting times will be set in an effort to accommodate the attendance of all Steering Committee members. The Extension Coordinator will notify members of the Partnership, Steering Committee, and Work Groups of respective meetings.

OPEN DISCUSSION

Participants may express their views candidly, but without personal attacks. Time is shared because all participants are of equal importance.

AGENDA

AgriLife Extension, GBRA and TSSWCB, in consultation with Steering Committee members, are charged with developing meeting agendas. The anticipated topics are determined at the previous meeting and through correspondence. A draft agenda will be sent to the Steering Committee with the notice of the meeting. Agendas will be posted on the project website. Agenda items may be added by members at the time that the draft agenda is provided. The Extension Coordinator will review the agenda at the start of each meeting and the agenda will be amended if needed and the Steering Committee (or Work Group) agrees. The Steering Committee (or Work Group) will then follow the approved agenda unless they agree to revise it.

MEETING SUMMARIES

Extension and GBRA will take notes during the meetings and may conduct audio recording (for the sole purpose of note taking). Meeting summaries will be based on notes and/or the recording. Extension and GBRA will draft meeting notes and distribute them to the Steering Committee or Work Group for their review and approval. All meeting summaries will be posted on the project website.

DISTRIBUTION OF MATERIALS

Extension and GBRA will prepare and distribute the agenda and other needed items to the Partnership. Distribution will occur via email and websites, unless expressly asked to use U.S. Mail (i.e. member has no email access). To encourage equal sharing of information, materials will be made available to all. Those who wish to distribute materials to the Steering Committee or a Work Group may ask Extension, GBRA or TSSWCB to do so on their behalf.

SPEAKING IN THE NAME OF THE COMMITTEE

Individuals do not speak for the Steering Committee as a whole unless authorized by the Committee to do so. Members do not speak for the AgriLife Extension, GBRA or TSSWCB. If Committee spokespersons are needed, they will be selected by the Steering Committee.



355A Soil and Crop Sciences, TAMU, College Station, Texas 77843-2474, 979-458-3478 or 979-575-4424

Dear "Name",

We want to thank you for your willingness to serve as a member of the Steering Committee, pending approval at the January 12th meeting, for the Geronimo and Alligator Creeks Watershed Protection Project. We look forward to working with you in this very important role in this project. For the project to be successful, your participation is essential, and we are pleased to have you partnering with us to protect your water resources.

The Texas AgriLife Extension Service, the Guadalupe Blanco River Authority and the Texas State Soil and Water Conservation Board are partnering with local citizens to protect and improve water quality in Texas' watersheds by helping to develop and implement Watershed Protection Plans. Watershed Protection Plans are designed to restore and/or protect surface waters impacted by nonpoint source pollution by implementing best management practices. Geronimo Creek and its tributary Alligator Creek flow through Comal and Guadalupe Counties, and have been selected for development of a Watershed Protection Plan based on water quality data for bacteria and nutrients.

Watershed Protection Plans are driven by the local community. Local stakeholders help identify potential sources of water pollution, and plan efforts to improve water quality. The ultimate goal of the Plan is to enhance and protect your water resources now, and into the future.

The Steering Committee will be going over and voting to approve the draft Ground Rules (enclosed) for the committee at the first meeting on January 12, 2010. Please take a few moments to review them before the meeting, and bring any questions or items for discussion. Overall, following the January 12th meeting, we plan to meet approximately monthly for the remainder of 2010 and into 2011. We will meet either as work groups or as the steering committee to develop the draft Geronimo and Alligator Creeks Watershed Protection Plan.

Your active participation is essential to the success of this important project. Thank you again for agreeing to join us as a Steering Committee member in developing and implementing a Watershed Protection Plan for Geronimo and Alligator Creeks. If you have any questions regarding this process, please contact Nikki Dictson with Extension at 979-575-4424 (n-dictson@tamu.edu) or Debbie Magin with GBRA at 830-379-5822 (dmagin@gbra.org). You also can visit our website at <http://geronimocreek.org>.

Sincerely,

Nikki Dictson

TEXAS WATERSHED STEWARD WORKSHOP: AGENDA
TUESDAY – NOVEMBER 10TH, 2009
GBRA RIVER ANNEX – SEGUIN, TX



8:00 a.m. – 8:30 a.m.	Sign-In/Register/Coffee Pre-test
8:30 a.m. – 9:00 a.m.	Introductions (of speakers and participants) Module 1: Program Introduction
9:00 a.m. – 9:30 a.m.	Module 2: Overview of Watershed Systems What is a Watershed? Watersheds in Texas How do Texans Use Watersheds? Principles of Watershed Hydrology Natural Watershed Features Natural Watershed Functions
9:30 a.m. – 10:00 a.m.	Module 3: Overview of Watershed Impairments Water Quantity and Quality
10:00 a.m. – 10:15 a.m.	BREAK
10:15 a.m. – 11:45 a.m.	Module 3: Overview of Watershed Impairments Point and Nonpoint Sources of Pollution Consequences of Impaired Water Quality Water Quality Law and Policy in Texas Water Quality Testing, Monitoring and Regulation
11:45 a.m. – 12:45 p.m.	Questions/Discussion LUNCH BREAK
12:40 p.m. – 2:00 p.m.	Module 4: Managing to Improve Watershed Function Using a Watershed Approach Water Quality Improvement Projects Agricultural Best Management Practices Water Quality Stewardship on Small Acreages Management of Non-domestic Animals and Wildlife Urban Best Management Practices Protecting Water Quality Around the Home
2:00 p.m. – 2:30 p.m.	Rainfall Simulator Demonstration BREAK
2:30 p.m. – 3:30 p.m.	Group Discussion Module 5: Community-Driven Watershed Protection and Management Importance of Local Watershed Involvement Forming and Sustaining Community Watershed Organizations and Partnerships
3:30 p.m. – 3:45 p.m.	Questions, Discussions, Conclusions
3:45 p.m. – 4:00 p.m.	Post-Test

TEXAS WATERSHED STEWARD WORKSHOP: AGENDA
TUESDAY – NOVEMBER 10TH, 2009
GBRA RIVER ANNEX – SEGUIN, TX



8:00 a.m. – 8:30 a.m.	Sign-In/Register/Coffee Pre-test
8:30 a.m. – 9:00 a.m.	Introductions (of speakers and participants) Module 1: Program Introduction
9:00 a.m. – 9:30 a.m.	Module 2: Overview of Watershed Systems What is a Watershed? Watersheds in Texas How do Texans Use Watersheds? Principles of Watershed Hydrology Natural Watershed Features Natural Watershed Functions
9:30 a.m. – 10:00 a.m.	Module 3: Overview of Watershed Impairments Water Quantity and Quality
10:00 a.m. – 10:15 a.m.	BREAK
10:15 a.m. – 11:45 a.m.	Module 3: Overview of Watershed Impairments Point and Nonpoint Sources of Pollution Consequences of Impaired Water Quality Water Quality Law and Policy in Texas Water Quality Testing, Monitoring and Regulation
11:45 a.m. – 12:45 p.m.	Questions/Discussion LUNCH BREAK
12:40 p.m. – 2:00 p.m.	Module 4: Managing to Improve Watershed Function Using a Watershed Approach Water Quality Improvement Projects Agricultural Best Management Practices Water Quality Stewardship on Small Acreages Management of Non-domestic Animals and Wildlife Urban Best Management Practices Protecting Water Quality Around the Home
2:00 p.m. – 2:30 p.m.	Rainfall Simulator Demonstration BREAK
2:30 p.m. – 3:30 p.m.	Group Discussion Module 5: Community-Driven Watershed Protection and Management Importance of Local Watershed Involvement Forming and Sustaining Community Watershed Organizations and Partnerships
3:30 p.m. – 3:45 p.m.	Questions, Discussions, Conclusions
3:45 p.m. – 4:00 p.m.	Post-Test
